

Valley Parkway Improvements

Christina Lane

Transportation Planner

Yelena Onnen

Transportation Operations &
Planning Supervisor

Melodie Clayton

Associate Transportation Engineer

Valley Pkwy Overlay Project



Overview – Project Scope

- Valley Parkway
 - S. Valley Rd. to Ken Caryl Ave.
- Overlay Project
 - Routine maintenance projects that occur throughout County and based on pavement condition
 - Curb to curb; minimal concrete work; crossings, operations

Addressing Concerns Outside Project Area

- No concerns outside Valley Pkwy will be addressed during this project

Valley Pkwy Overlay Project

Interactive Feedback Map Responses

- 38 individual comments
- **Common Themes**
 - Rectangular Rapid Flashing Beacons (RRFBs or pedestrian activated flashers)
 - Speeding
 - Stop sign compliance
 - Drainage – marked for R&B



Valley Pkwy Overlay Project

Last time we met...

Completed Data Collection

- Speed data
 - Outliers travel at high speeds
 - Average speed aligns with posted speed limit

Data to be Collected:

- Intersection approaches
- Comprehensive traffic data
 - Daily and turning movements at some intersection
- Crash Data – Safety Study will provide greater details
- Pedestrian counts
 - Trails team assisting
 - Warrants will determine RRFB as option

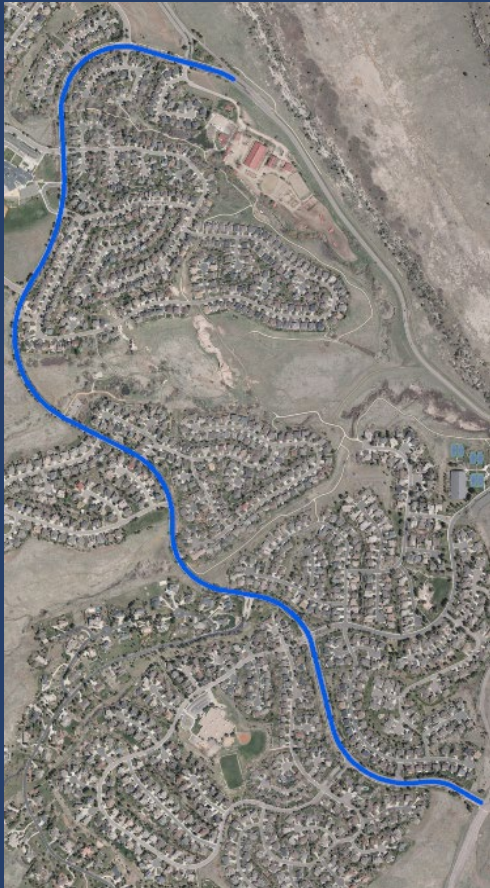
Valley Pkwy Overlay Project

New Findings

Completed Data Collection

- Intersection approaches
 - Determine all-way stop warrants
 - No all-way stops are warranted
- Comprehensive traffic data
 - Daily and turning movements at some intersection
 - LTL at N. Ranch Rd. warranted
- Pedestrian counts
 - Trails team assisting – determine RRFB as option
 - No RRFBs warranted
- Crash Data – Safety Study will provide greater details
 - No identified crash patterns

Valley Pkwy Overlay Project



Alternatives

Alternative A: No Action

- Overlay and restripe Valley Pkwy as it exists today
- No change in operations

Alternative B: Bicycle Lanes

- Incorporate bicycle lanes
- Reduce number of through lanes and lane width
- Maintain unwarranted stop signs on Valley Pkwy

Alternative C: Bicycle Lanes and Raised Crossings

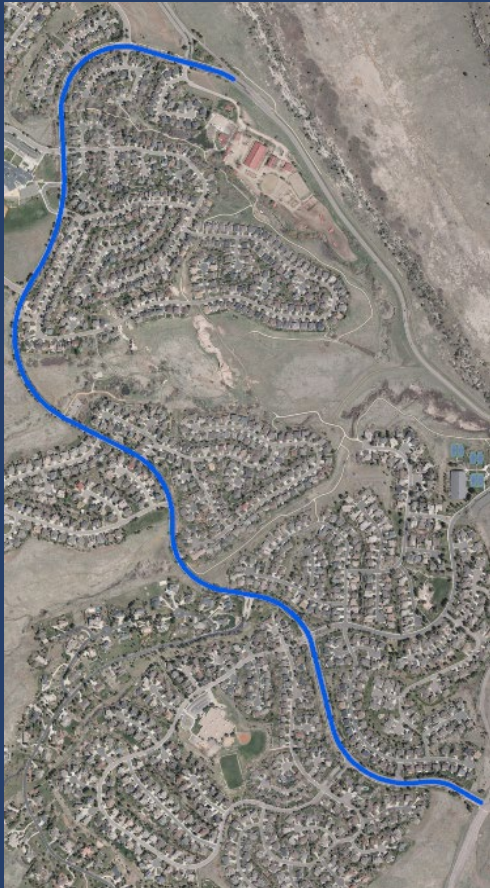
- Remove stop signs on Valley Pkwy and install raised crossings
 - Additional raised crossings possible if approved by HOA Board

Valley Pkwy Overlay Project

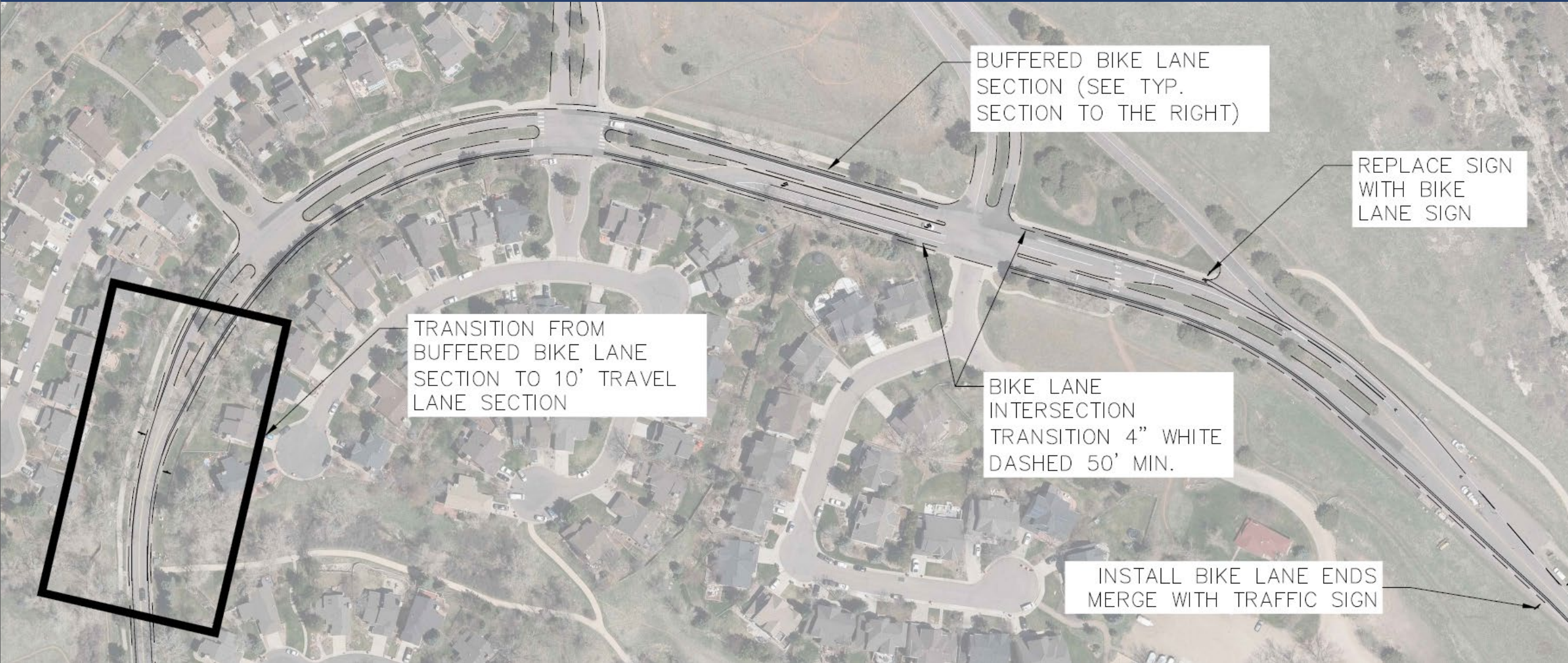
Alternatives

Alternative B: Bicycle Lanes

- Incorporate bicycle lanes
- Reduce number of through lanes and lane width
- Maintain unwarranted stop signs on Valley Pkwy



Alternative B



BUFFERED BIKE LANE SECTION (SEE TYP. SECTION TO THE RIGHT)

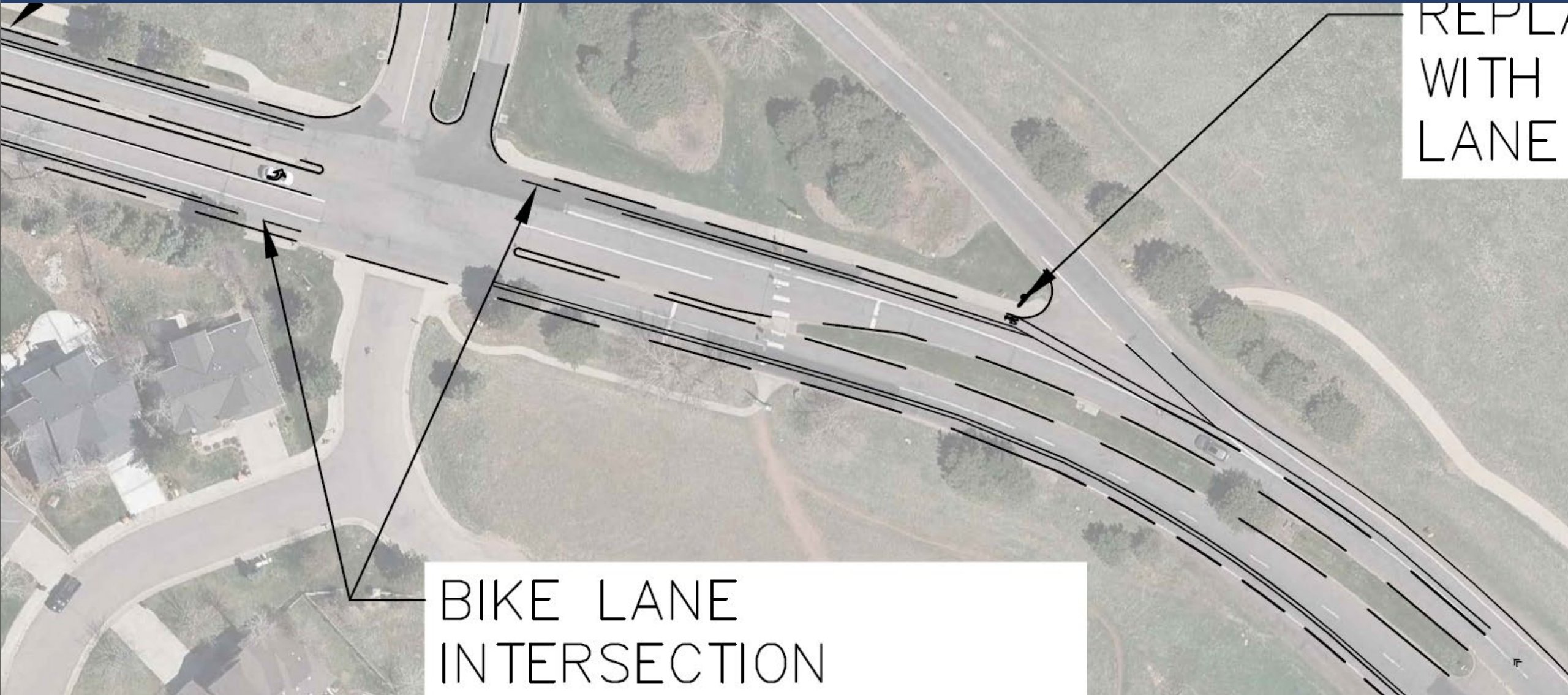
REPLACE SIGN WITH BIKE LANE SIGN

TRANSITION FROM BUFFERED BIKE LANE SECTION TO 10' TRAVEL LANE SECTION

BIKE LANE INTERSECTION TRANSITION 4" WHITE DASHED 50' MIN.

INSTALL BIKE LANE ENDS MERGE WITH TRAFFIC SIGN

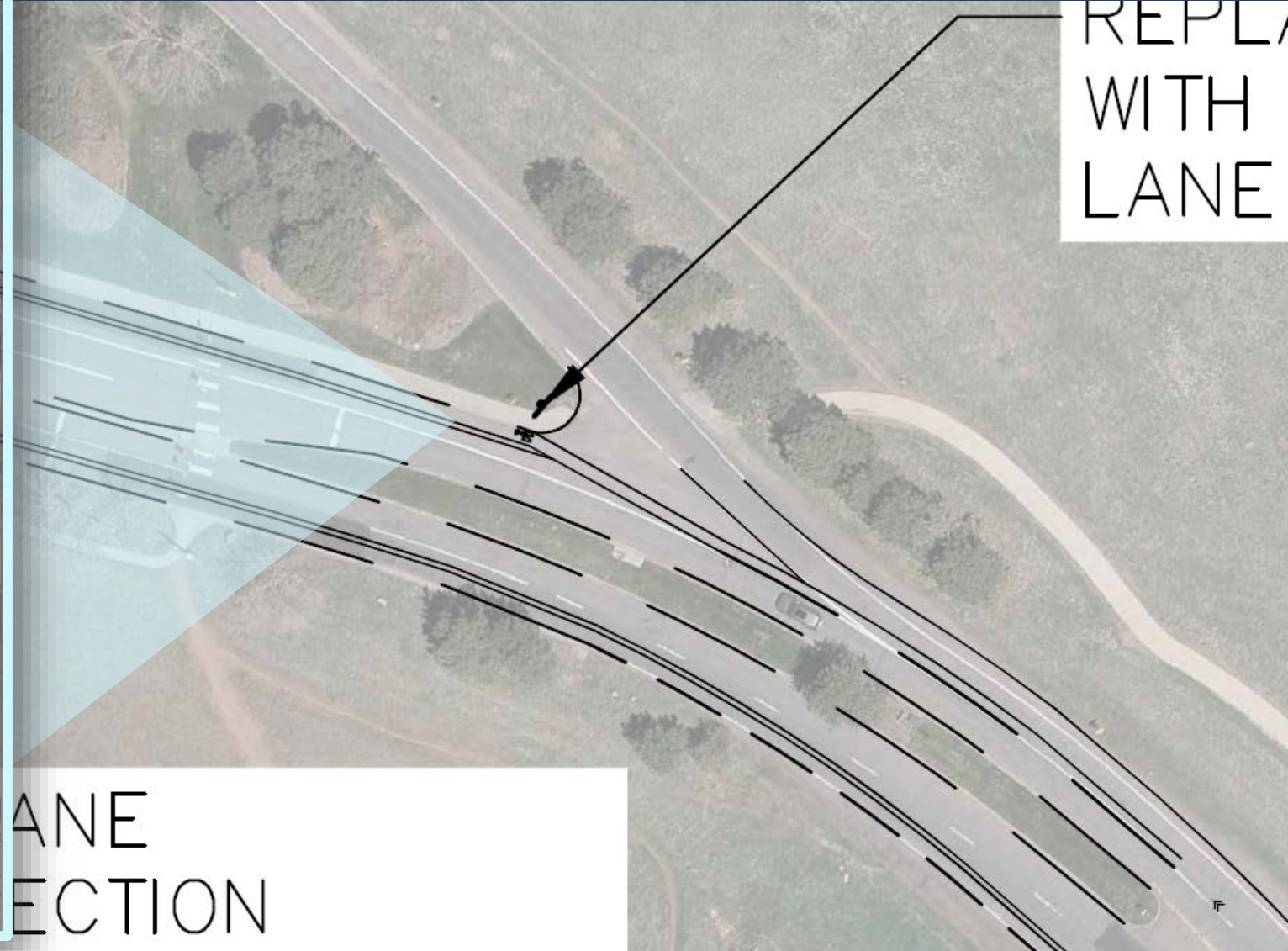
Alternative B



BIKE LANE
INTERSECTION

REPLACE
WITH
LANE

Alternative B



Alternative B



BIKE LANE
INTERSECTION
TRANSITION 4" WHITE
DASHED 50' MIN.

10' TRAVEL LANE
SECTION (SEE TYP.
SECTION TO THE RIGHT)

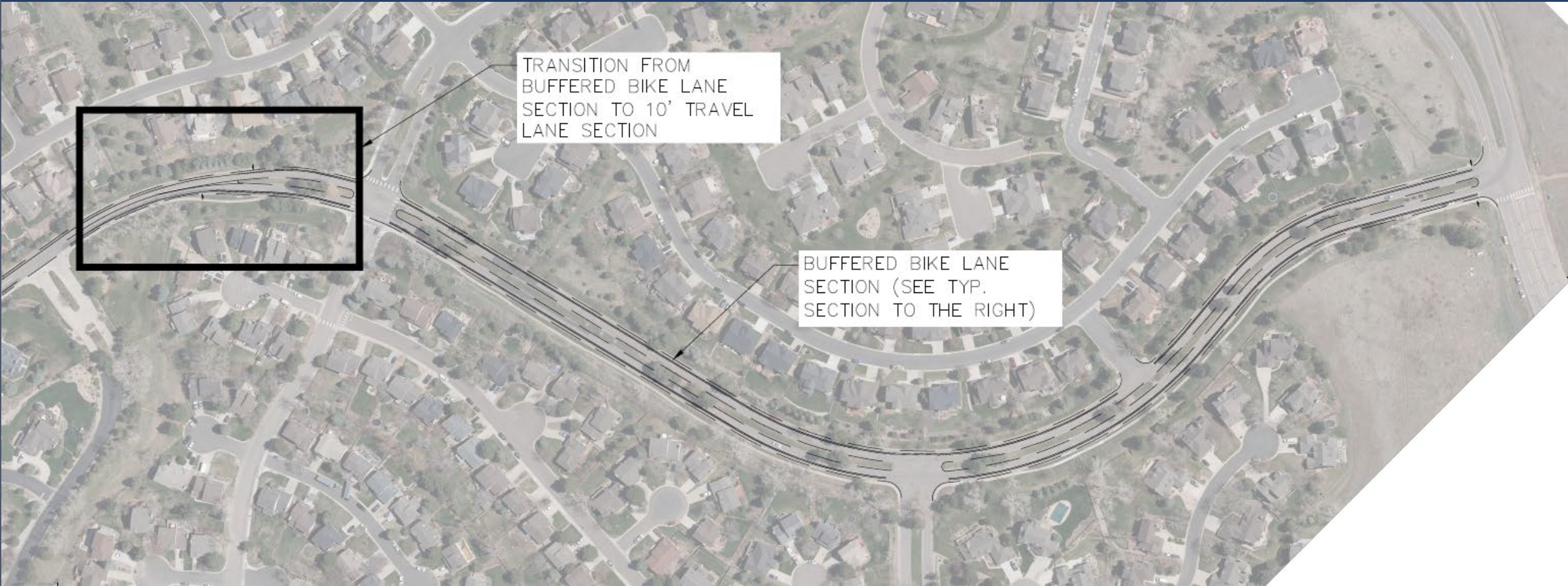
Alternative B



BIKE LANE
INTERSECTION
TRANSITION 4" WHITE
DASHED 50' MIN.

10' TRAVEL LANE
SECTION (SEE TYP.
SECTION TO THE RIGHT)

Alternative B



TRANSITION FROM
BUFFERED BIKE LANE
SECTION TO 10' TRAVEL
LANE SECTION

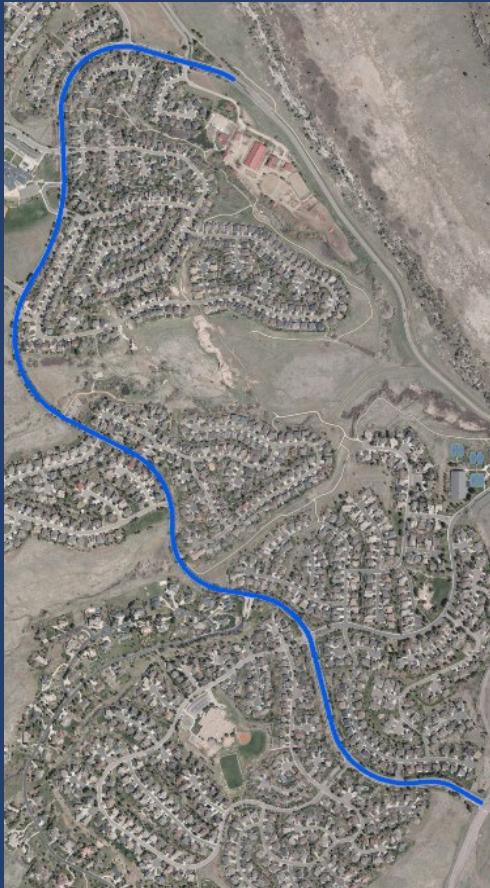
BUFFERED BIKE LANE
SECTION (SEE TYP.
SECTION TO THE RIGHT)

Valley Pkwy Overlay Project

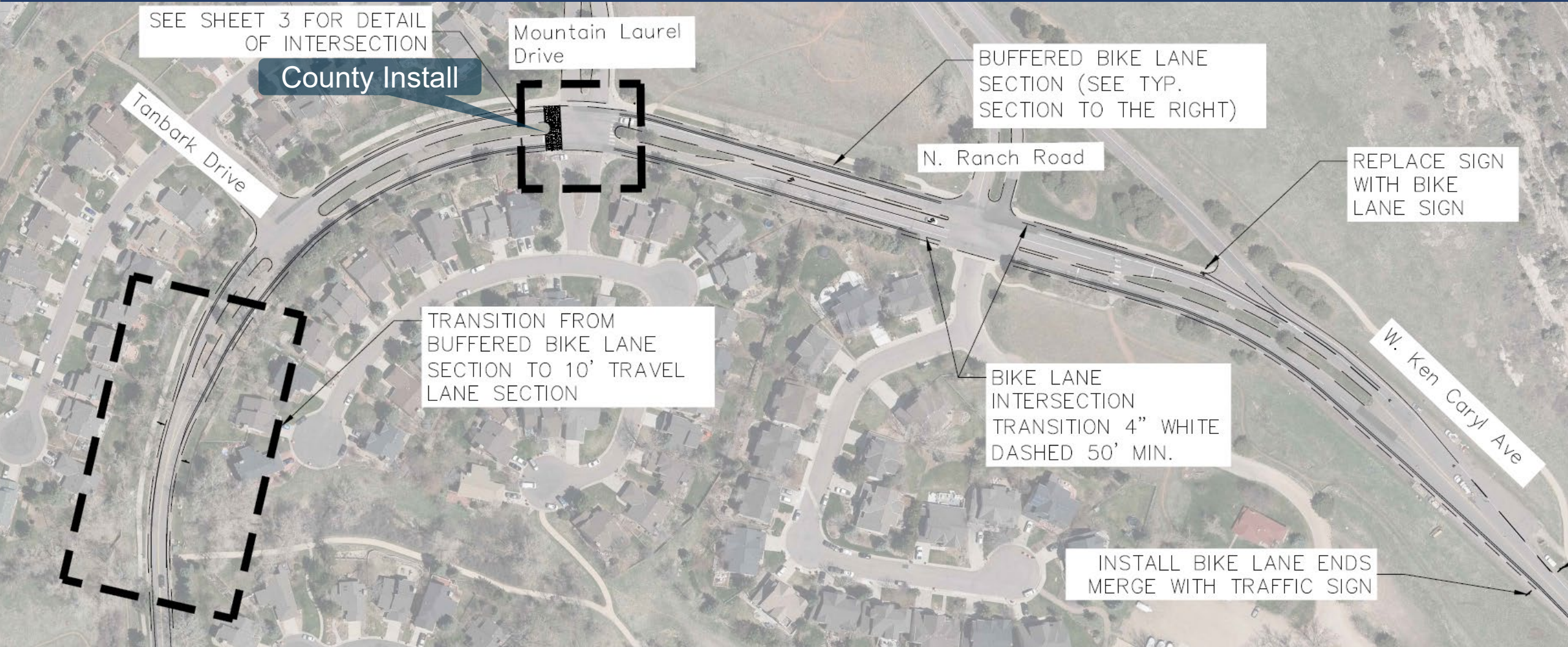
Alternatives

Alternative C: Bicycle Lanes and Raised Crossings

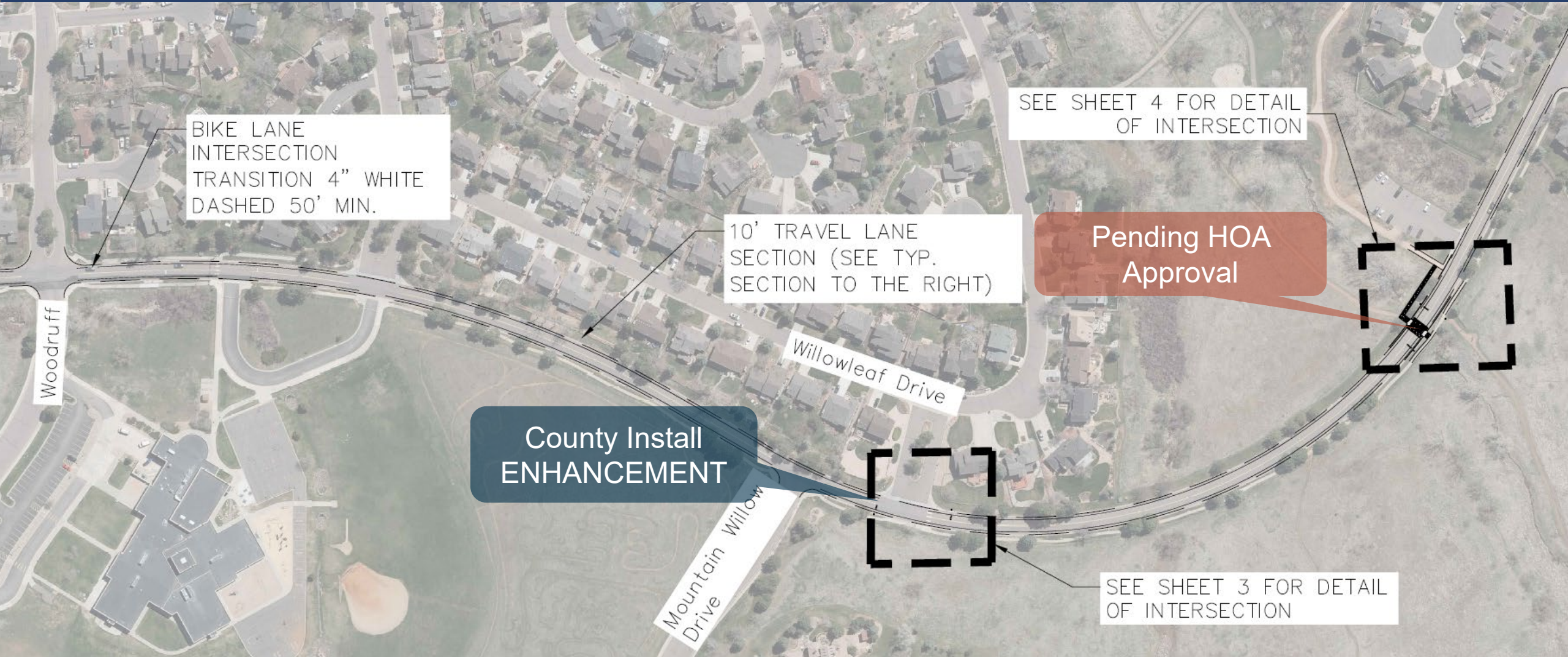
- Remove stop signs on Valley Pkwy and install raised crossings
 - Additional raised crossings possible if approved by HOA Board
- Staff's preferred alternative



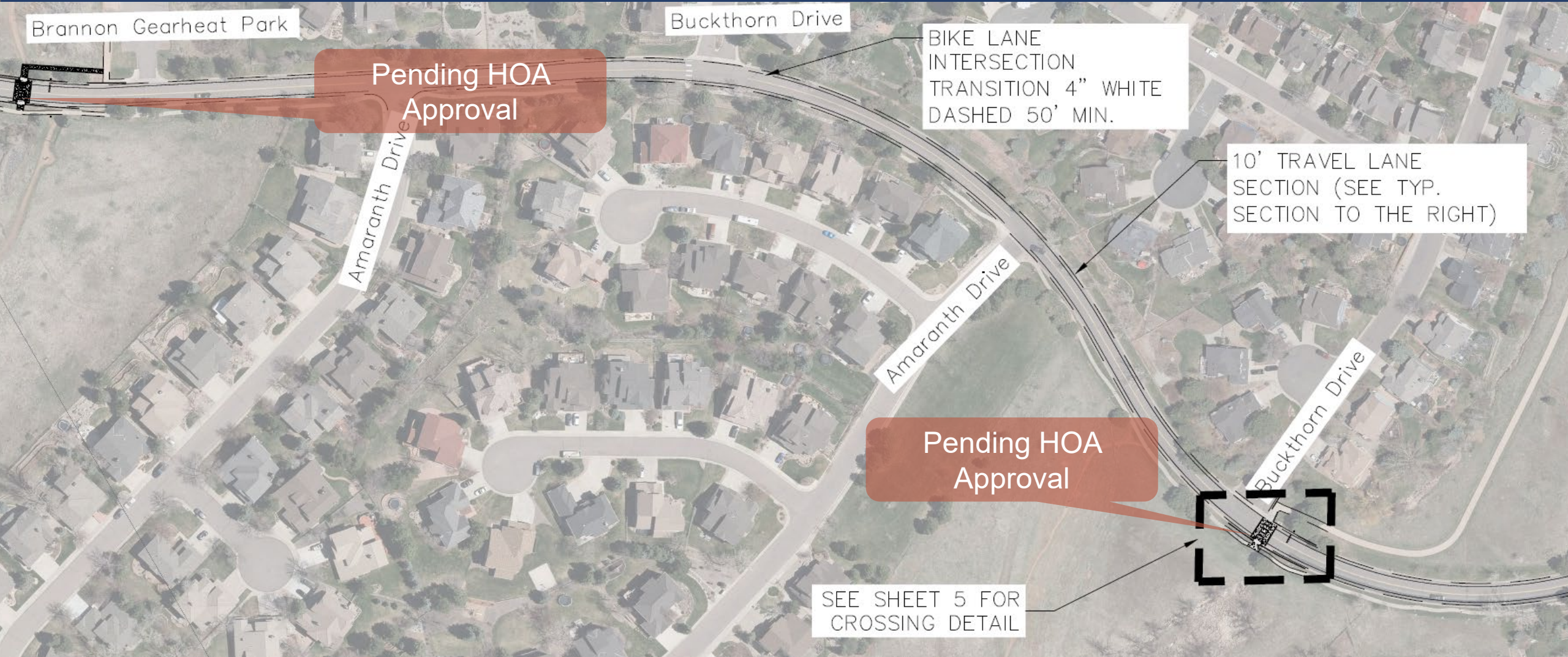
Alternative C



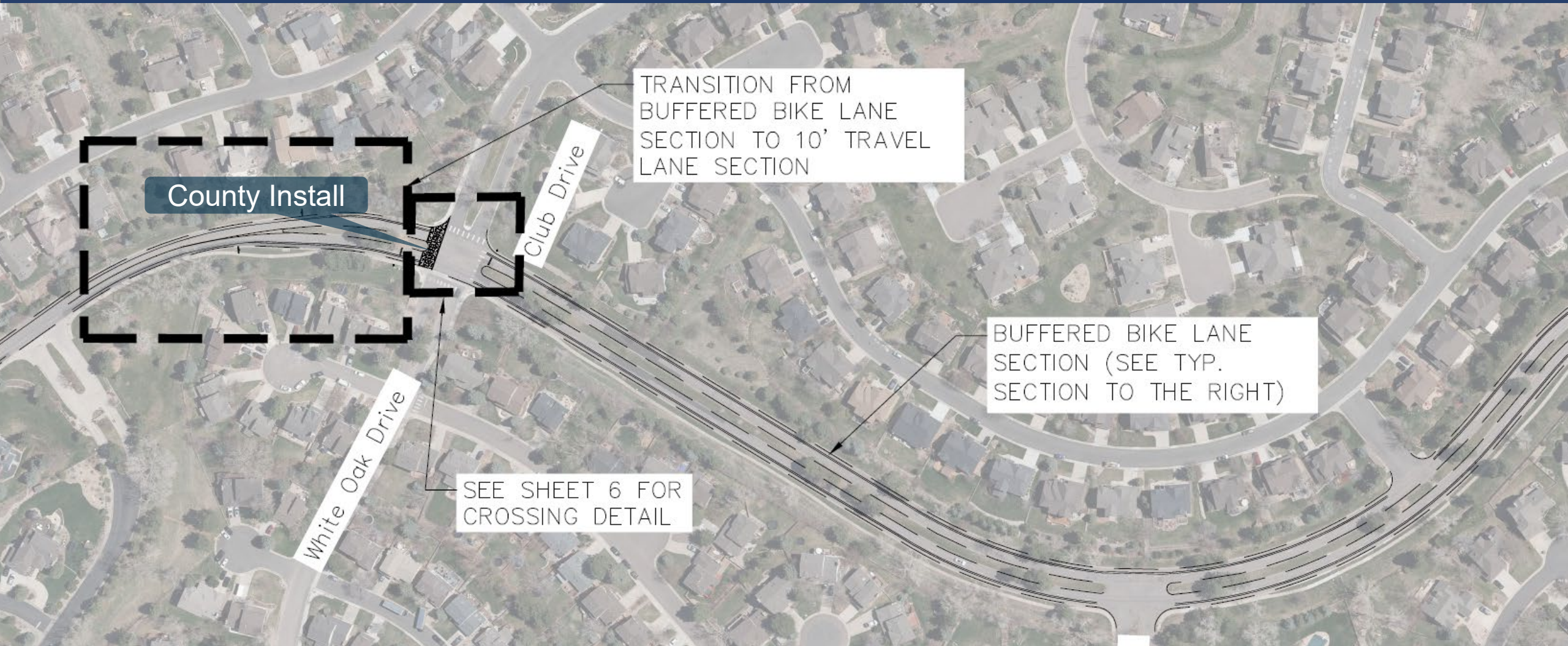
Alternative C



Alternative C



Alternative C



Alternative C - County

Raised Crossing – Mountain Laurel Drive



Alternative C - County

Enhanced Crossing – Mahonia



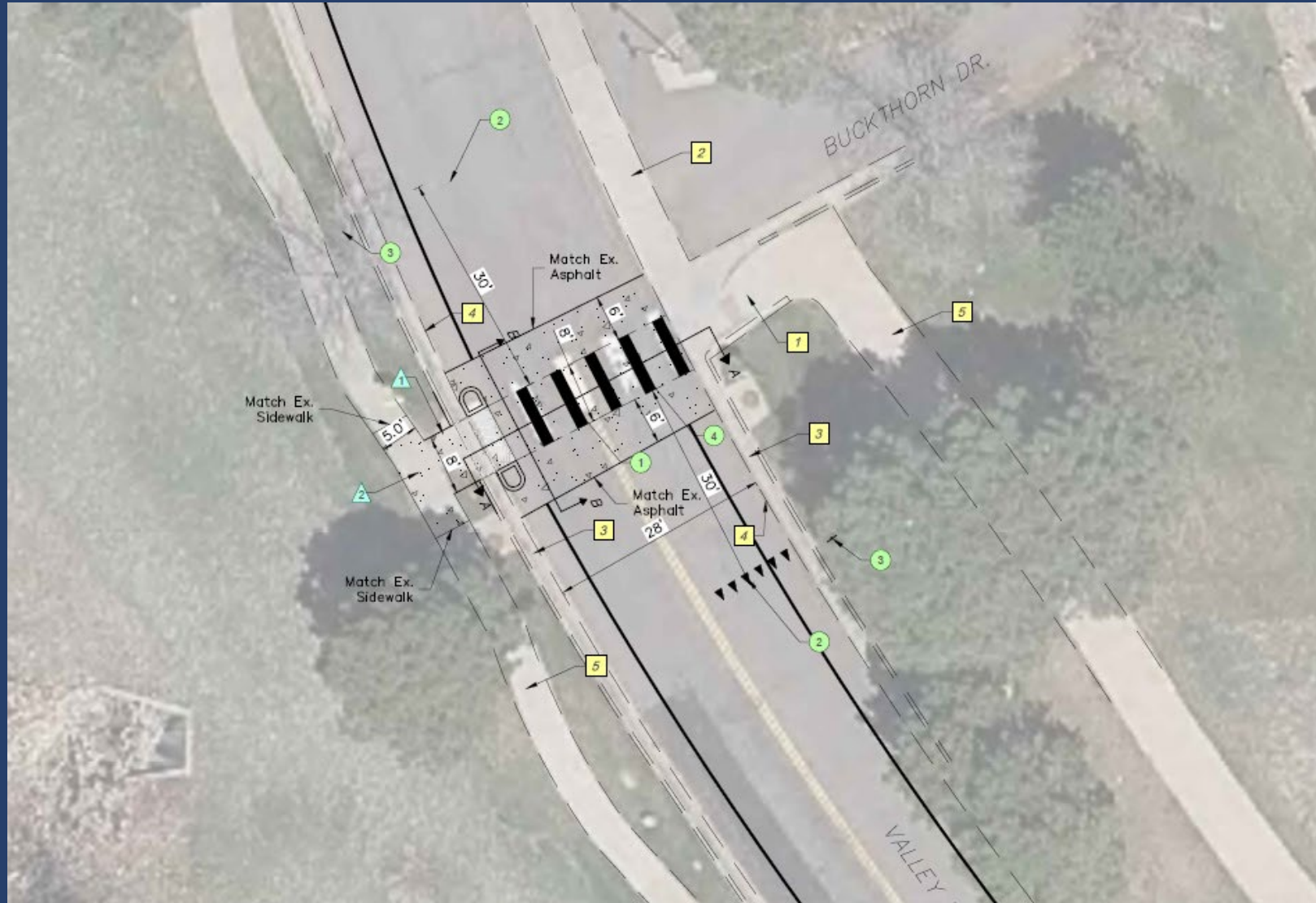
Alternative C - County

Raised Crossing – Mountain Laurel Drive



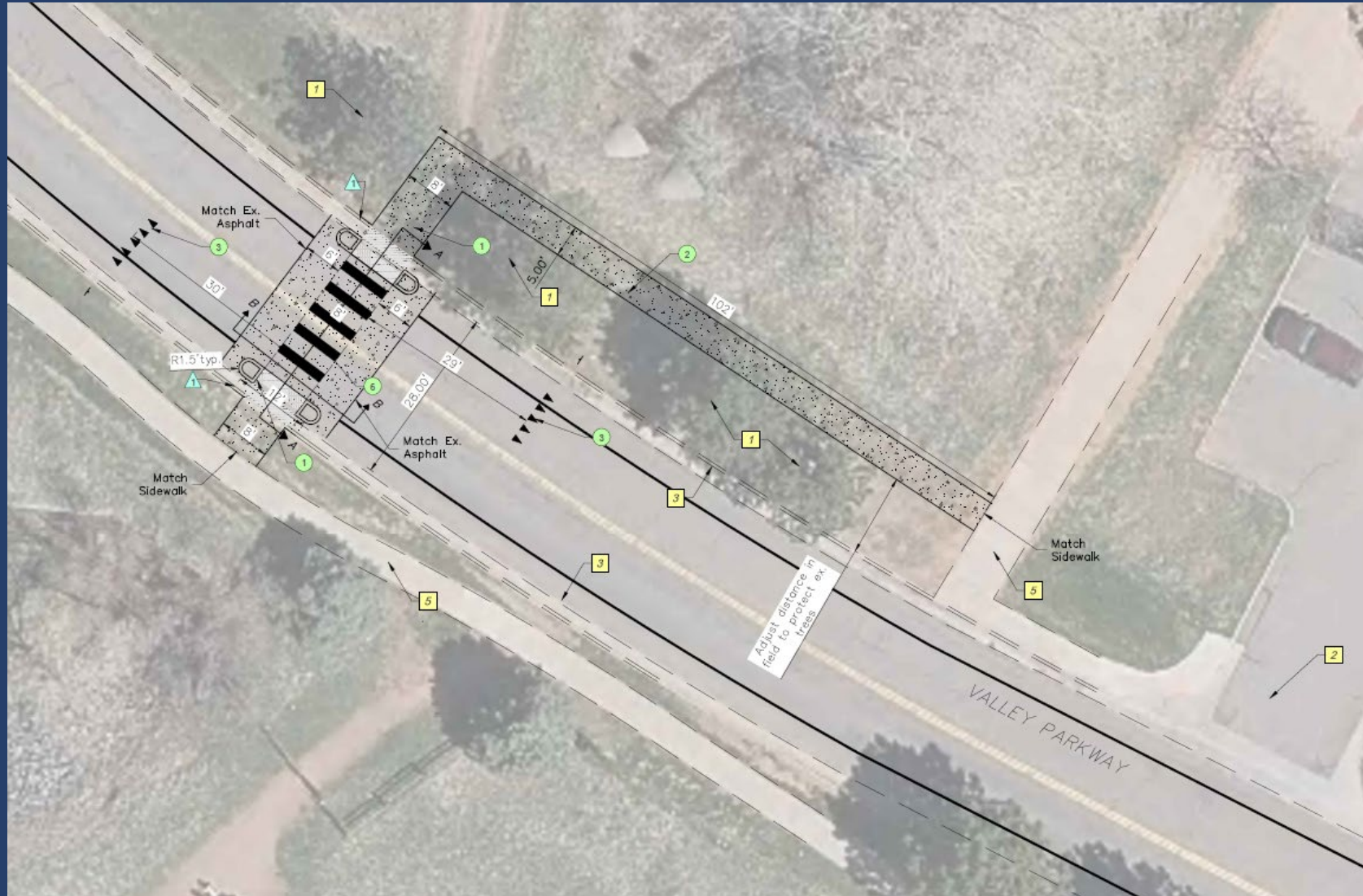
Alternative C – HOA

Raised Crossing – Buckthorn Drive



Alternative C – HOA

Raised Crossing – Brannon Gearhart Park



Valley Pkwy Overlay Project

Survey

What Alternative do you prefer?

Alternative A: No Action

Alternative B: Bike lanes, keep stop signs

Alternative C: Bike lanes, remove stop signs and replace with raised crossings.

Survey will **close**
Tuesday,
May 10, at 11:45 p.m.



[Valley Pkwy Preferred
Alternative Survey
\(office.com\)](#)

Valley Pkwy Overlay Project

**Additional
Questions?**

Christina Lane
Transportation Planner
clane@jeffco.us

