



KEN CARYL RANCH COMMUNITY PARK

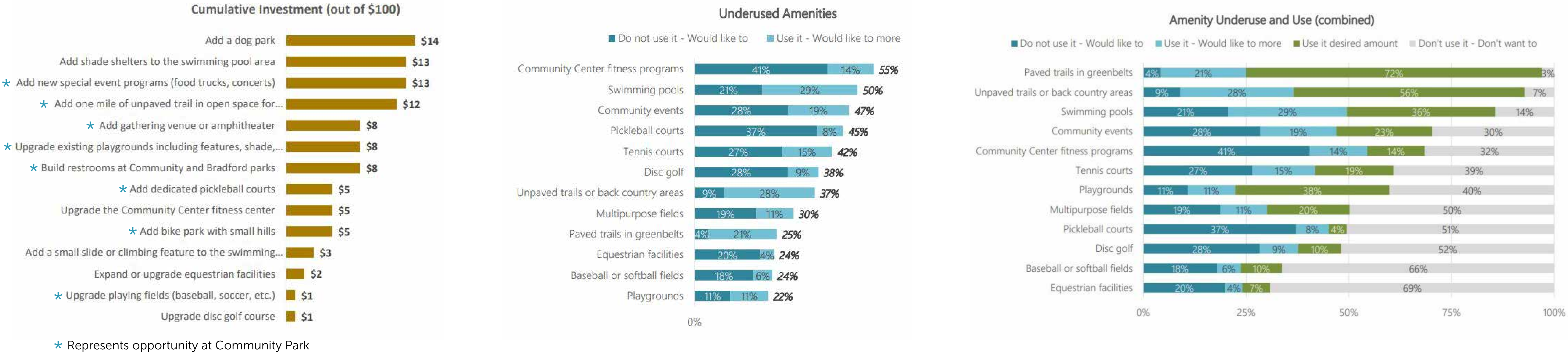
COMMUNITY MEETING: NEEDS AND OPPORTUNITIES

COMMUNITY PARK MASTERPLAN VISION

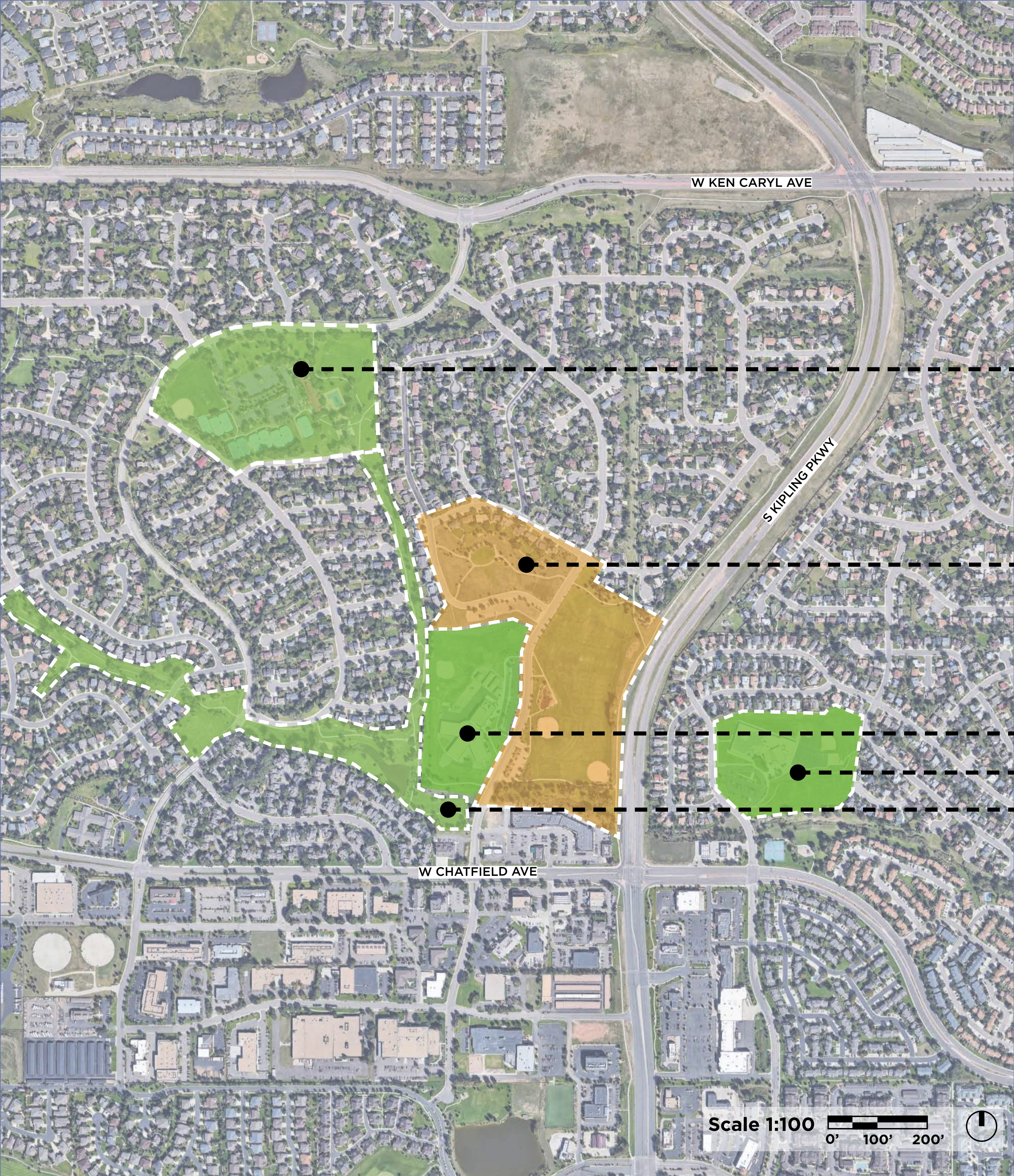
The Community Park Masterplan will provide a strategy for how the park can serve the Ken Caryl Community for the next 30 years.

The District acquired this 14-acre area across from Shaffer Elementary on December 31, 1991 and developed in 1992 and 1993. Over the past 30 years it has served an incredible purpose for the community as one of the primary locations of athletics, including soccer and baseball. It is also home to one of the community’s accessible playgrounds and an immensely popular picnic shelter. Its location next to Shaffer Elementary and along several of the community’s greenbelts makes it a community hub for diverse activities.

The community will be invited to participate in a master planning process to not only look at how we use the park today but how our children and grandchildren will use the park for the next 30 years. Master planning processes will help establish a long-range plan to help ensure that community resources are used effectively, and priorities are based on the greatest community benefit. Aligning the community’s vision to the master plan will help to establish a clear plan of action and clearly identify the priorities that helped to establish that plan.



Some of the top park-related investment suggestions from the 2021 Ken-Caryl Resident Survey include new special event programs, adding a gathering venue or amphitheater, upgrading existing playgrounds, and building restrooms at Community Park. The Community Park has the opportunity to address more than half of the identified Cumulative Investments.





COMMUNITY CONTEXT

- Ken Caryl Ranch House and Park (0.4mi)
 - Recreation Center
 - Field Play & Sport Courts
 - Facility Rentals
 - Picnic Shelter
 - Pool
 - Playground
 - Disc Golf
 - Administration Offices

- Ken Caryl Ranch Community Park (Project Site)
 - Field Play
 - Veterans Memorial
 - Playground
 - Prairie Meadows
 - Picnic Shelter

- Shaffer Elementary School
- Mortensen Elementary School (0.5mi)
- Settlement Pond Park and Greenway
 - Green Belts

Scale 1:100  



COMMUNITY PARK CAMPUS

Seating

- 8 Benches
- 7 Picnic Tables including 5 at Playground

Program

- Native Walk and Garden in Prairie Meadows
- 1.1 miles of native trails and walks
- Large Turf Space (Multi-Use and Soccer)
- 2 Baseball Fields
- Picnic Shelter
- Playground
- Portable Restrooms
- 2 Parking Lots
- Memorials (Benches and Veterans Monument)

ISSUES AND CONSIDERATIONS

Safety

- Existing activities and program organization have potential to cause safety concerns for park users.
 - Sports play adjacent to other park users.
 - Proximity to vehicular traffic and parking.

Facilities

- Existing facilities require improvements.
 - Uneven ground creates accessibility issues.
 - Natural conditions create an unusable playing surface.
 - Inadequate storage for user groups.
 - Overall accessibility.

Non-Negotiables

- Veterans Monument will not be moving or changing.
- Prairie meadows will not become active play.
- A dog park will not be discussed as an option.



GOALS AND OBJECTIVES

Improve Safety

- Organize program and activities to ensure safety throughout the park.
 - Provide universal access throughout the park.
 - Space sports activities safely in relation to park users.

Update Facilities

- Upgrade existing facilities to meet the needs of the community and additional events.
 - Address uneven field conditions.
 - Update irrigation system.
 - Provide new sport field facilities.
 - Provide additional quality of life facilities (Restrooms)
 - Include storage facilities for sports groups.

Increase Activity

- Provide new opportunities that will support the current and future community for the next 30 years.
 - Social and event opportunities
 - Formal and natural play spaces
 - Educational and natural experiences
 - Increased seating and gathering spaces.



EXISTING PROGRAM AND AMENITIES

Park Total: 24.5 Acres

- **Active** 2% (0.5 Acres)
 - Structure Play and Gathering

- **Passive** 25% (6.2 Acres)
 - Native Colorado Experiences

- **Sport** 37% (9.1 Acres)
 - Open and Marked Field Sports

- **Facilities** 5% (1.3 Acres)
 - Operational Needs for the Park
(Parking, Restrooms, Storage)

- **Dedication Spaces and Seating**
 - Moments which celebrate members of the community
(Benches, Memorials, Seating, and Gardens)

PARK INVENTORY AND CONDITION



A | SPORT

SOUTHEAST
BASEBALL FIELD



A | PASSIVE

NATURE WALK PATHWAY



A | ACTIVE

PLAYGROUND
STRUCTURES



B | SPORT

BASEBALL FIELD,
BACKSTOP, DUGOUT
AND STORAGE



B | PASSIVE

NATURE WALK AND
LEGACY GARDEN



B | ACTIVE

PLAYGROUND
STRUCTURES AND
PICNIC SHELTER



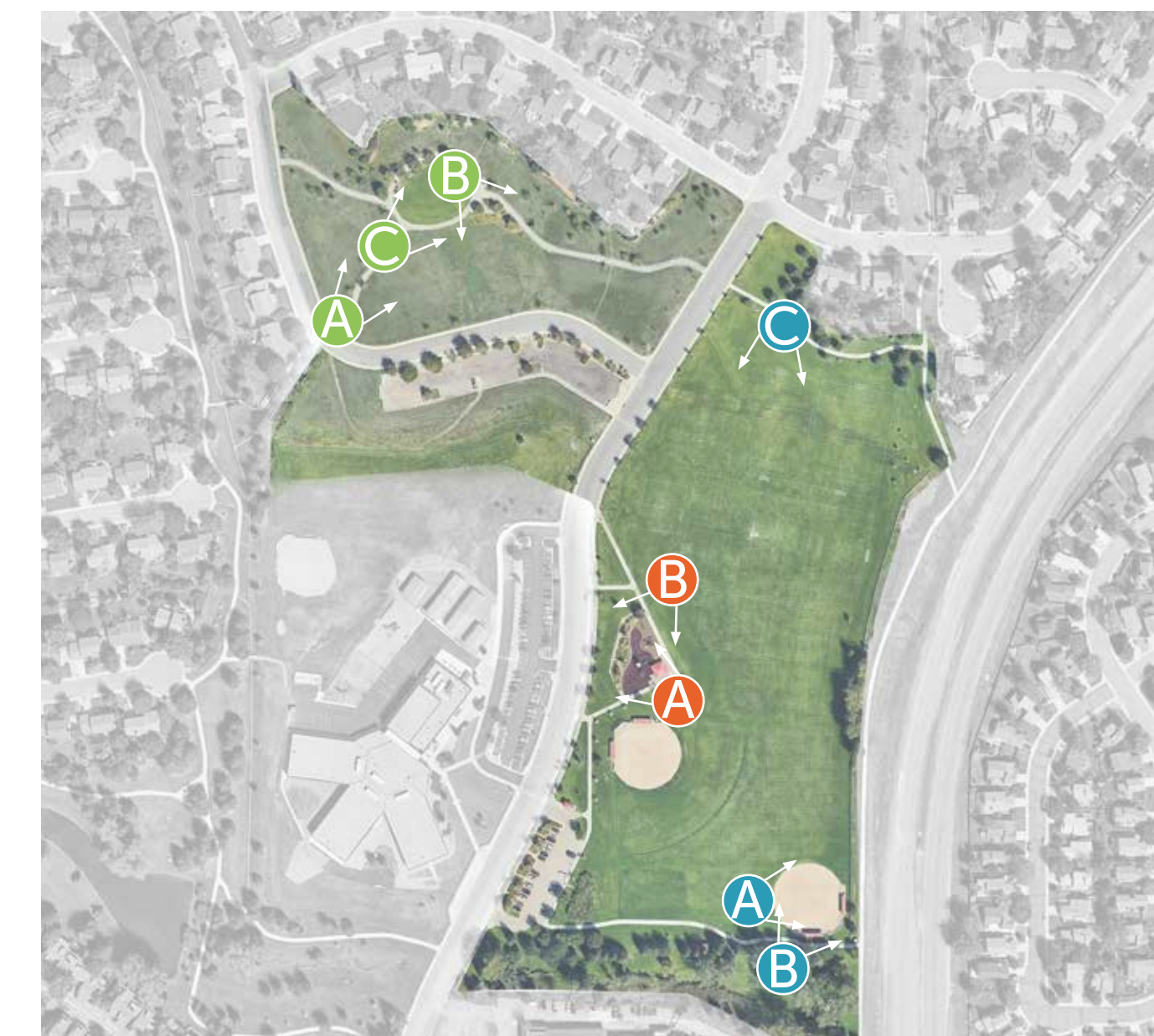
C | SPORT

MULTI-USE FIELDS
LOOKING SOUTH



C | PASSIVE

NATIVE AREA, BENCH
AND PICNIC SEATING



KEY MAP

PARK INVENTORY AND CONDITION



A | DEDICATION

ONE OF 8 DEDICATED BENCHES IN THE PARK. THIS ONE ON THE NORTH END OF THE PARK.



A | FACILITIES

NORTHWEST PARKING LOT - RECYCLED ASPHALT. LOOKING SOUTHWEST TOWARDS THE MOUNTAIN VIEWS.



D | FACILITIES

PORTABLE RESTROOMS LOCATED AT MAIN PARKING LOT.



B | SEATING

5 SEATING AND PICNIC AREAS WITH PAVILION STRUCTURE AT THE PLAYGROUND



B | FACILITIES

SOUTHWEST MAIN PARKING LOT - PAVERS. LOOKING TOWARDS SANGRE DE CRISTO ROAD CROSSWALK AND SHAFFER ELEMENTARY SCHOOL.



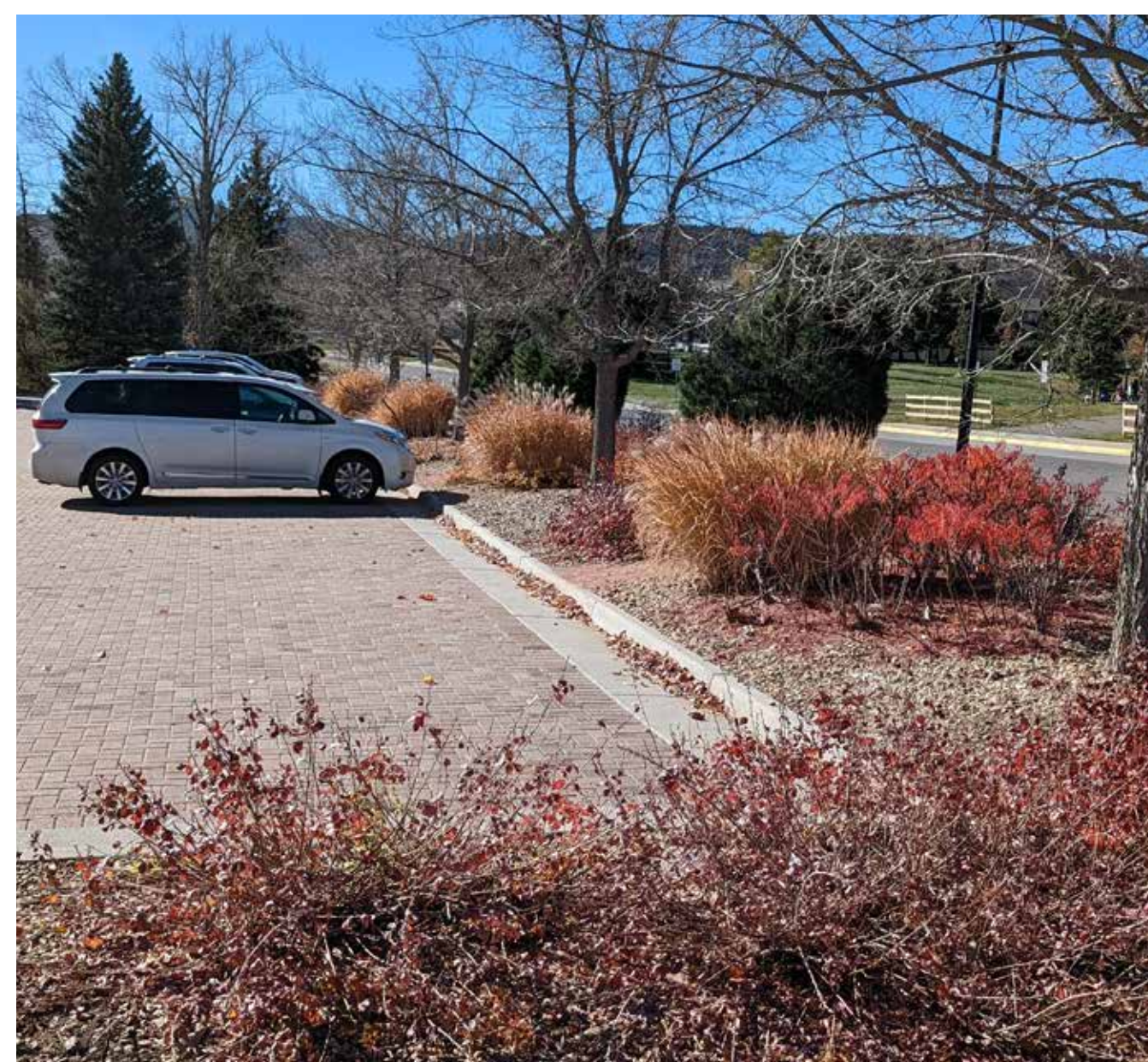
E | FACILITIES

THE SOLE STORAGE SHED IN THE PARK LOCATED AT THE SOUTH END.



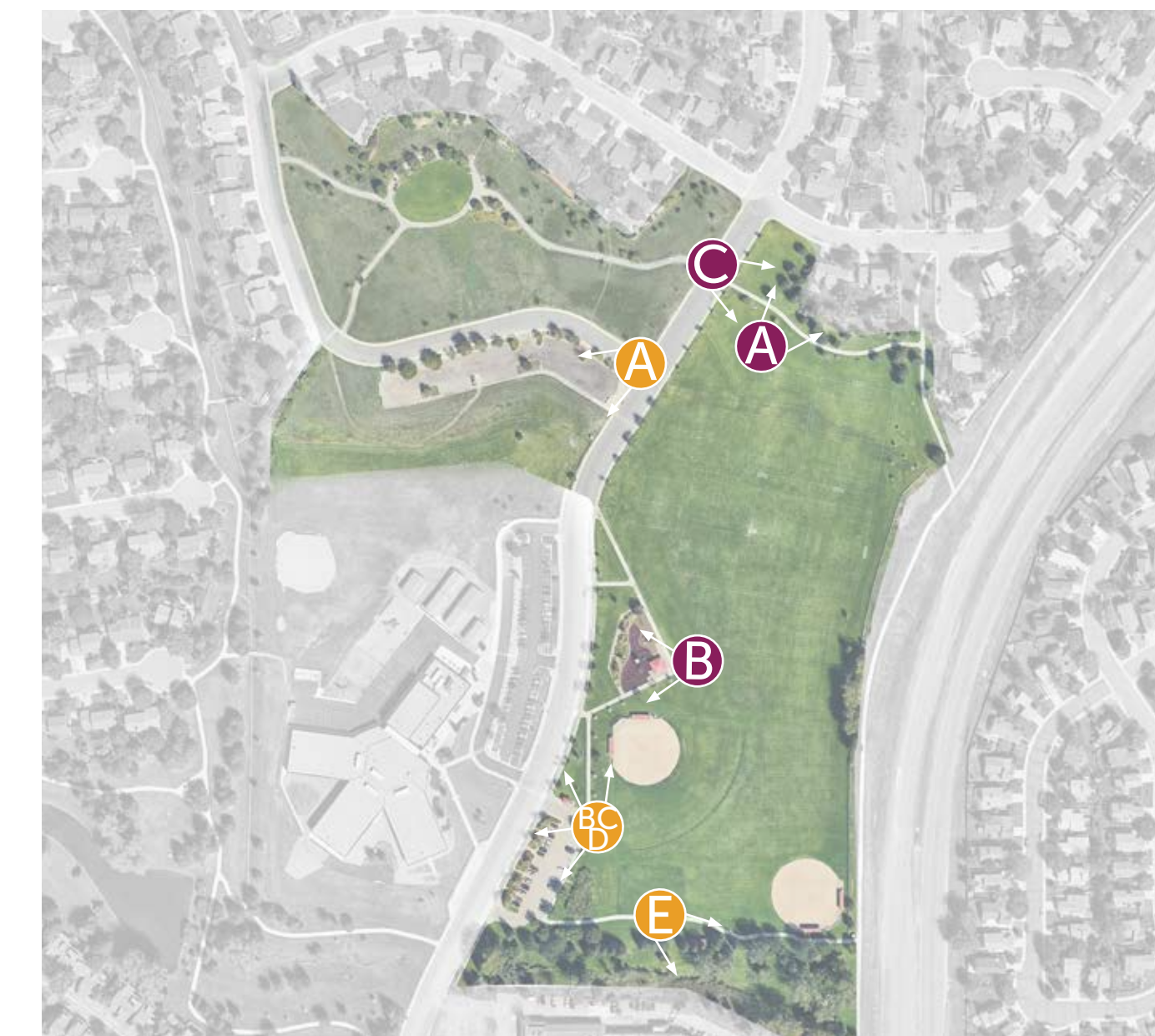
C | DEDICATION

VETERANS MEMORIAL ON THE NORTHERNMOST POINT OF THE PARK



C | FACILITIES

SOUTHWEST MAIN PARKING LOT AND LANDSCAPE.

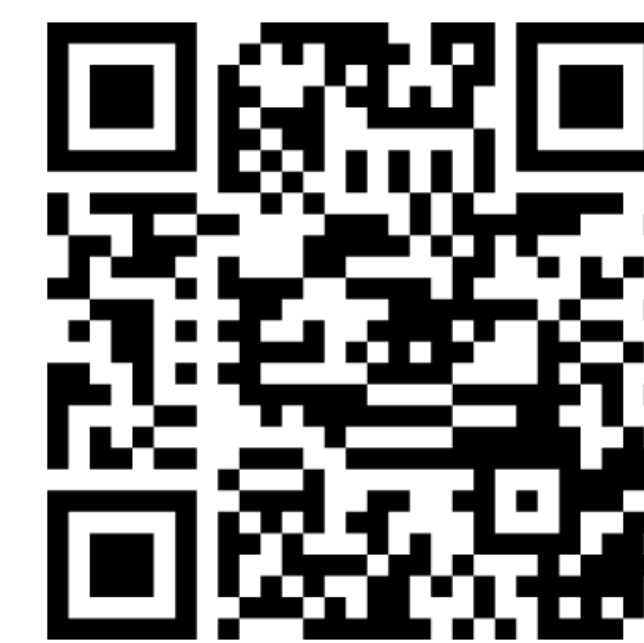


KEY MAP



WHAT DO YOU LIKE ABOUT YOUR PARK?

- Where do you play, eat, gather?
 - Place a red dot!
- Where do you walk, bike, etc?
 - Draw a green line!
- Which sports fields do you use?
 - Place a blue dot!
- Where do you park?
 - Place a yellow dot!



JOIN US ON MENTIMETER!

Scale 1:80 0' 80' 160'

HOW DO YOU USE YOUR PARK NOW?

ADD YOUR STICKY NOTE TO THE BOARD!



ACTIVE: Play, Eat, Gather



PASSIVE: Walk, Sit, Relax



SPORTS: Baseball, Flag Football, Soccer

HOW DO YOU WANT TO USE YOUR PARK?

ADD YOUR STICKY NOTE TO THE BOARD!



ACTIVE: Play, Eat, Gather



PASSIVE: Walk, Sit, Relax



SPORTS: Baseball, Flag Football, Soccer



JOIN US ON MENTIMETER!

WHAT ELSE DO YOU WANT IN YOUR PARK?

PLACE A DOT ON THE IMAGES YOU LIKE!

PASSIVE



ACTIVE



SPORT



SOCIAL



JOIN US ON MENTIMETER!

KEN CARYL COMMUNITY PARK



NEXT STEPS

(TODAY) COMMUNITY MEETING #1 NEEDS AND OPPORTUNITIES

DECEMBER | KICK-OFF PROJECT

- Gain feedback and ideas from community members

COMMUNITY MEETING #2 CONCEPTUAL DEVELOPMENT

JANUARY | CONCEPT DEVELOPMENT

- Compile all community feedback and ideas
- Create conceptual design options to explore the opportunities for the park masterplan

COMMUNITY MEETING #3 PARK MASTERPLAN

FEBRUARY | MASTERPLAN REFINEMENT

- Synthesize conceptual plans into one masterplan solution.



COMMUNITY SURVEY
QUESTIONS

WHAT CAN YOU DO TO STAY INVOLVED?

- Reach out to District Manager, Traci Wieland, at traciw@kcranch.org with any questions, ideas, concerns, etc.
- Engage in the community survey questions on MentiMeter using the QR Code.
- Follow any updates via the following mediums
 - Website (ken-carylranh.org)
 - Facebook
 - Weekly E-news
 - Newspaper

